

*the*

# STATUS OF WOMEN IN ARIZONA **2020**



**ARIZONA FOUNDATION FOR WOMEN**

**MAUREEN BUSSOLETTI**

**AFW Board Chair**

Thursday, April 29, 2021



# ARIZONA FOUNDATION FOR **WOMEN**

## OUR MISSION



To advance the status of Arizona's women through **research, advocacy and philanthropy** to ensure their **safety, health and economic independence.**

## OUR FOUNDATION



- Founded in 1995 by Marilyn R. Seymann
- Created to address the unmet needs of Arizona women.
- Over \$2.7 million and counting granted to community nonprofits over our 25 years

## OUR FOCUS



- Advocate to ensure laws, bills and budgets protect & elevate women in our state.
- Issue the Status of Women in Arizona Research Reports
- Grant dollars to non-profits that support our S.H.E. mission
- Educate the community (SHE Talks™) & develop women leaders (SHE Leads!™)

Published in  
2007 & every  
3 to 4 years  
since

Focus areas of  
Safety, Health &  
Economic  
Empowerment

Data based  
snapshot of the  
status of  
women in  
Arizona

Primary resource  
for legislators,  
non-profits and  
local community  
leaders

Build awareness,  
influence policies  
and trigger long-  
term change

## 2020 REPORT

- Blend of facts and narrative
- Scorecard Metrics to track progress
- Personal stories & testimonials
- First hand quotes from influential local leaders
- **Special chapter on COVID**  
\*focus of today's discussion



# EXECUTIVE SUMMARY

A snapshot of key indicators summarizing progress and opportunities.

## SAFETY



41% of women in Arizona have been a victim of sexual violence. Almost half of the perpetrators were a current or former intimate partner.



99% of Maricopa County's rape kit backlog has been submitted for testing. 96% has been completed.



12 Convictions  
14 Indictments

This reduction of Maricopa County's rape kit backlog has led to 12 convictions and 14 indictments.



Arizona is ranked 7th in the nation for the highest rate of females killed by males.



Over 2/3rds of these homicides were committed with guns.

## ECONOMIC EMPOWERMENT



In Arizona, a woman earns only 84 cents for every dollar a man earns.



Females continue to outpace males as undergraduate enrollees in two and four year post-secondary institutions.

Arizona ranks 6th in the nation for female representation in the state legislature and is one of six states with two U.S. Senators as of September, 2020.



Only 28% of Arizona families can afford infant care at an average cost of \$9,437 per year.

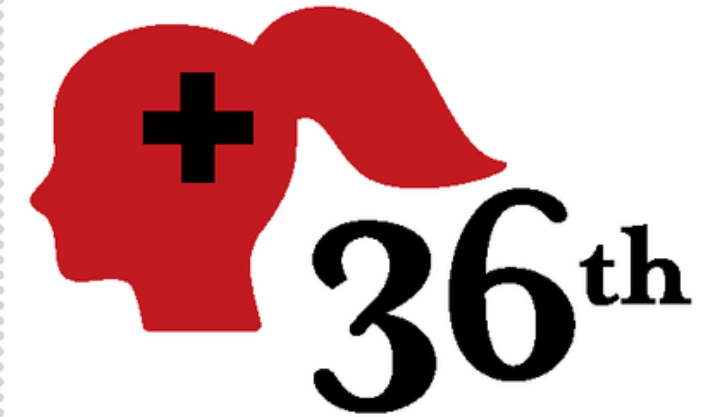
## HEALTH



In Arizona, 21% of low income women lack health insurance.



Arizona has the second highest growth rate for Alzheimer's diagnoses in the country. At age 65+, women have a 1 in 5 chance of developing Alzheimer's compared to men's 1 in 11 chance.



Arizona ranks 36th in the U.S. for access to mental health care.



29% of Hispanic women in Arizona have no health care provider.





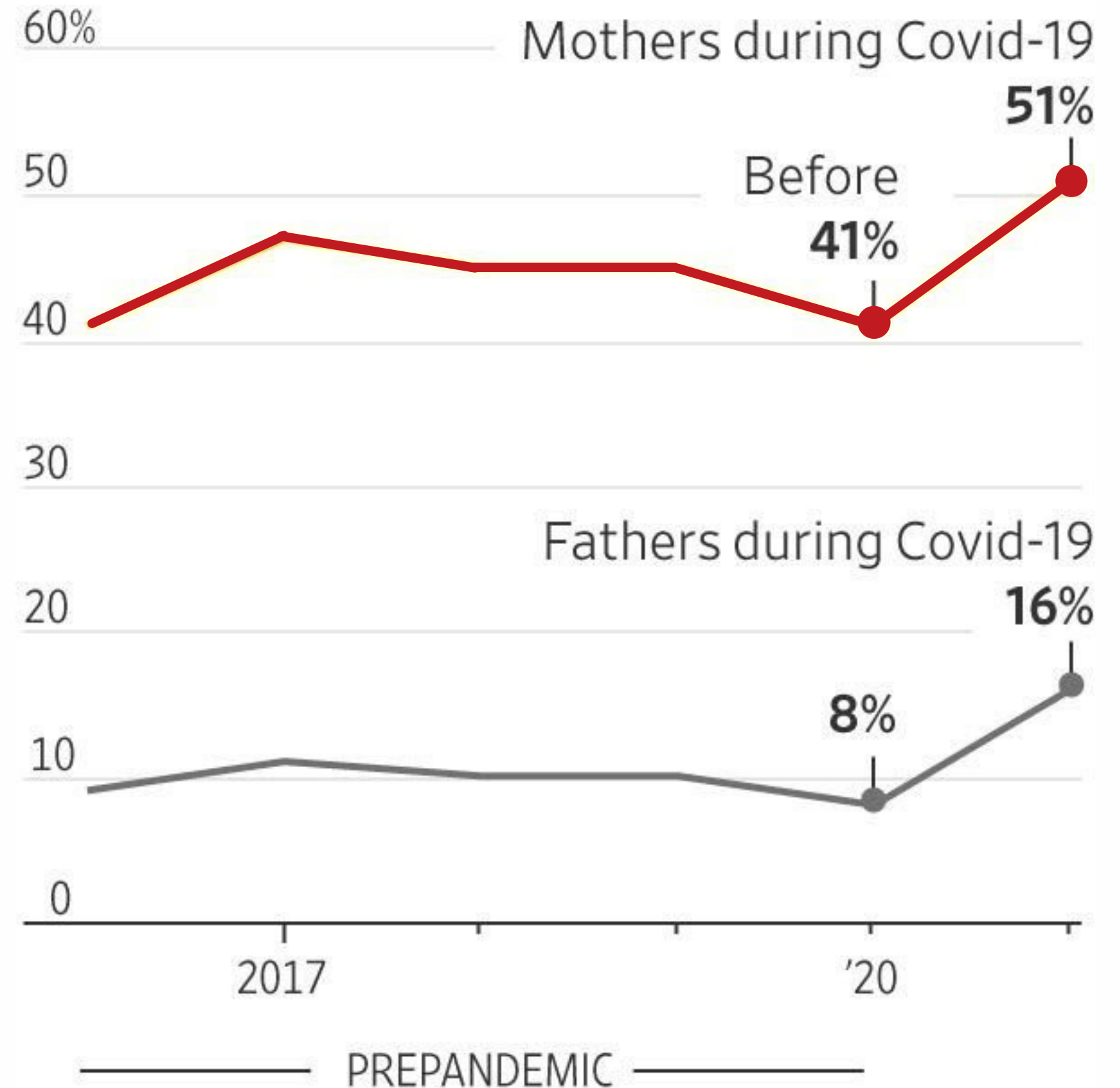
# The Pandemic's Unique Toll on Women

**The past year has amplified 4 key areas of concern for women as they balance the demands of work with the majority of care giving responsibilities at home and across essential roles.**

# THE PANDEMIC'S UNIQUE TOLL ON WOMEN

## 1. Women, especially women of color, are more likely to be responsible for childcare and home schooling.

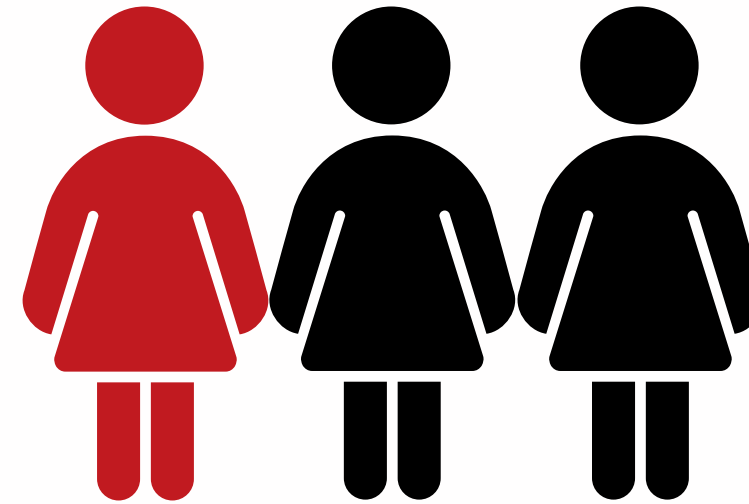
Shows share of working parents who report being responsible for most or all housework and/or childcare.



# THE PANDEMIC'S UNIQUE TOLL ON WOMEN

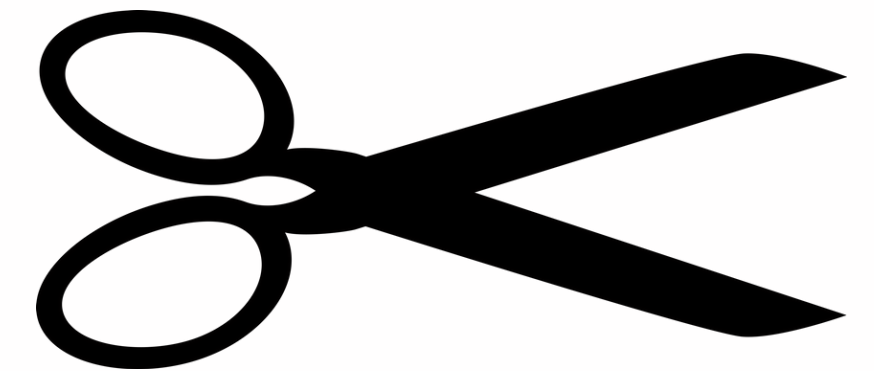
## 2. Long-term impacts may be realized across the workforce including:

- A reduction of women in the pipeline and in Sr, Leader roles
- Setback on gains in diversity & inclusion
- Significant impacts to company profits and share performance
- Meaningful impact to Company Culture



1 in 3 women considered downshifting their careers or leaving work all together.

Women's jobs are 1.8 times more likely to be cut in the recession as jobs held by men.



Between February and April 2020, women lost more than 12.1 million jobs...



...and only 43% of the jobs women originally lost have returned\*



# THE PANDEMIC'S UNIQUE TOLL ON WOMEN

## 3. Women's safety is at risk, with a sharp rise in domestic violence and more limited access to support organizations.

**Homicides involving domestic violence saw a 140% increase**

The City of Phoenix Police reported seeing a 140% increase in homicides involving domestic violence in the first half of 2020.\*

**67% of direct service providers report emerging needs not being met**

Programs reported needing technology (laptops, wifi hotspots, tablets) for survivors who are remotely sheltered as well as additional hygiene supplies.

**Shelter Space Reduced by 50%**

Domestic Violence/ Emergency Shelters reported about a 50% decrease in available shelter space due to adjustments made for social distancing and self-quarantine.

**Resources for Women are Dwindling**

Non-profits who support women are suffering (St Vincent DePaul, UMOM) with employee attrition, funding gaps, & costs to provide routine professional sanitizing of facilities.

\*Phoenix Police Crime Analysis and Research Unit Crime Statistics. (2020, August 7). First Half of 2020 Shows Dramatic Rise in Violent Crime, Property Crime Drop.

*The Impact of COVID-19 on Sexual and Domestic Violence in Arizona*, Arizona Coalition to End Sexual & Domestic Violence, June 2020.

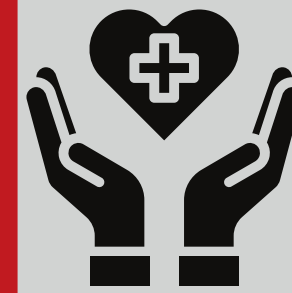


# THE PANDEMIC'S UNIQUE TOLL ON WOMEN

**4. The pandemic has highlighted and aggravated long-standing inequities for women in healthcare availability and access.**



**Mental Health:** 51% of women and 34% of men say that worry or stress related to the pandemic has affected their mental health.



**Disproportionate Toll on Communities of Color:** Hispanic women report higher rates of access barriers. 40% say they skipped preventive health services and 36% could not get a medical appointment.



**Delays in Critical Care:** 31.7% of Americans with breast cancer delayed diagnosis and treatment.



**Rural Access to Healthcare:** Continues to be a concern, especially for pre-natal care where women may have to travel 200-400 miles to see a physician.



# **The Path Forward** - Women Have a History of Resilience and Strength

There is no force more powerful than a woman determined to rise.

- UNKNOWN

Vulnerability is the birthplace of innovation, creativity and change.

- BRENÉ BROWN

## In Arizona

Raise awareness of the bright spots and challenges faced by Arizona women

Leverage strong female legislative representation (6th in the country) to influence policies and programs

High concentration of nonprofits like AFW dedicated to supporting women

Women lead men in receiving at least one dose of the vaccine by 20%\*

## Across the Workplace

Reset norms around flexibility and pace of work

Strengthen employee communication

Adjust policies & programs to better support employees with mental health/ and well-being a higher priority

Take actions to minimize gender bias & address the distinct challenges women of color face



# Learn More

[azfw.org/2020afwresearchreport](https://azfw.org/2020afwresearchreport)

- Access and download the 2020 Status of Women in Arizona Report online!
- Download the accompanying Data Addendum for more detailed metrics
- View presentations from community leaders and Report authors by watching our release event on-demand

